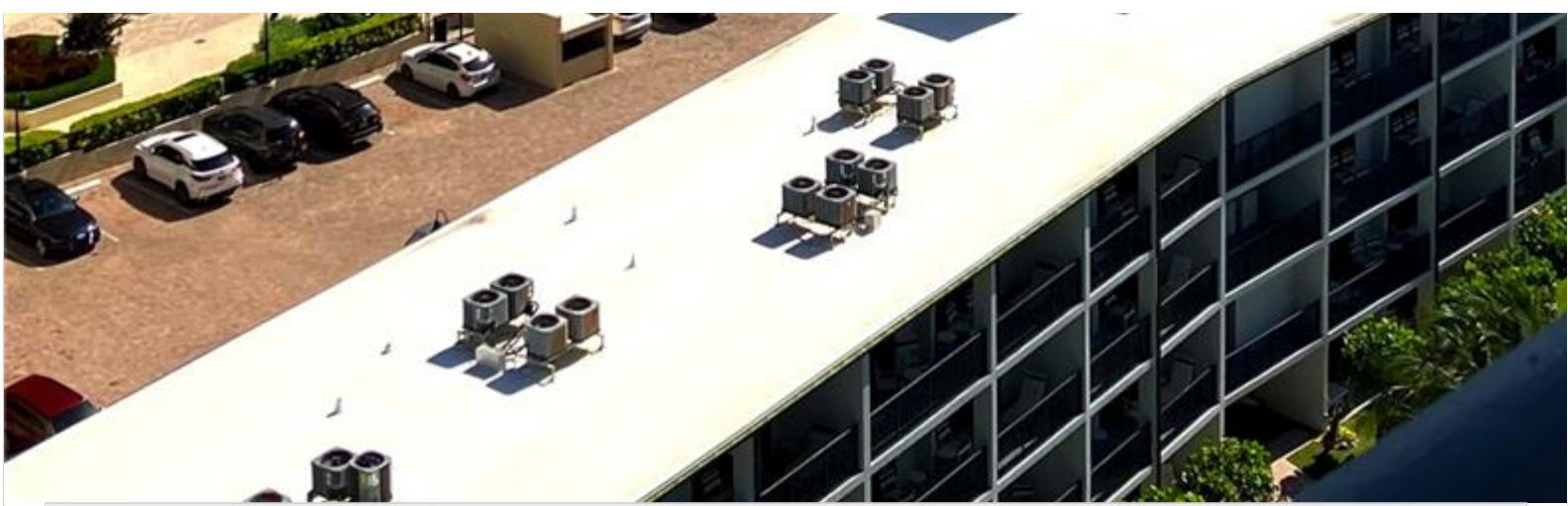




A11852984 - SEFMLS © 2026



Price: \$495,000

MLS Number: A11852934

Condo / Town Home

2000 S Ocean Blvd Unit 16N, Lauderdale By The Sea, Florida 33062 USA

Beds: 2

Baths: 2

Living Area: 1,160

Unit: 16N

HOA Fees: \$1,512

Waterfront: YES

Year Built: 1971

Community: ROYAL COAST CONDO

Subdivision: ROYAL COAST CONDO

Elementary School: Menab

Junior High: Pompano B.Middle

High School: Northeast

ABOUT THIS PROPERTY

Located in the highly desirable Royal Coast, Lauderdale-by-the-Sea, this true 2-bedroom, 2-bathroom penthouse offers an excellent opportunity to enjoy coastal living at a compelling value. Positioned on the top floor, the residence features higher ceilings that create an open, airy feel throughout, along with a modernized kitchen, updated bathrooms, and the convenience of an in-unit washer/dryer. A private balcony provides a relaxing space to enjoy ocean breezes, while direct beach access allows for effortless, "toes-in-the-sand" steps from your door. Residents benefit from resort-style amenities, including a spacious pool and deck spanning the width of the building with wide ocean views, as well as covered parking. The building exterior is scheduled to be painted in white and light blue. Situated between Fort Lauderdale and Pompano Beach, Lauderdale-by-the-Sea is a charming barrier island community known for its laid-back atmosphere, scenic reefs, and year-round activities. The property is also conveniently located near local cafes, shops, stores, nightlife, and the area's well-known pier, offering a balanced blend of relaxation and accessibility.

PROPERTY
LOCATION

Image



©2026 | BRECO REALTY GROUP, LLC,
YOUR REAL ESTATE ADVISOR IN MIAMI
USA: + 1.954.884.5050

BRECO@BRECREALTY.COM | [PRIVACY POLICY](#)

