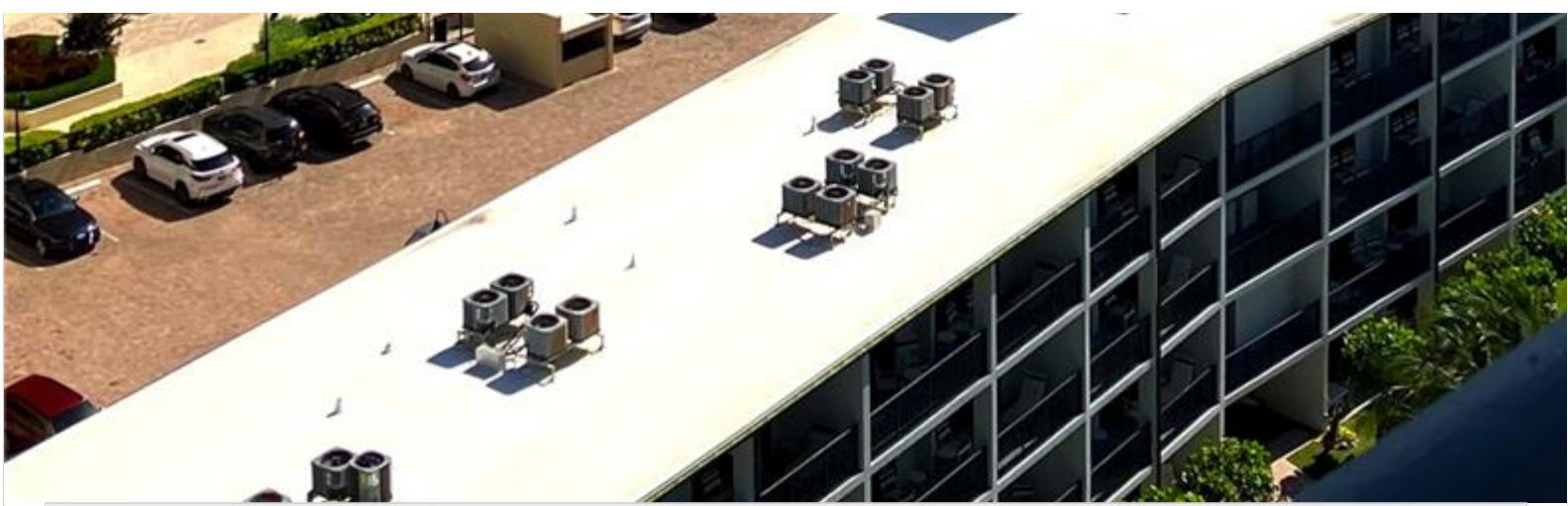




A11852984 - SEFMLS © 2026



**Precio: \$495,000**

**Numero de MLS: A11852934**

**Condominios/Town Home**

**2000 S Ocean Blvd Unit 16N, Lauderdale By The Sea, Florida 33062 USA**

**Cuartos: 2**

**Baños: 2**

**Area Habitable: 1,160**

**Unidad: 16N**

**HOA Fees: \$1,512**

**Frente al Agua: YES**

**Año construido: 1971**

**Comunidades: ROYAL COAST CONDO**

**Subdivisión: ROYAL COAST CONDO**

**Escuela elementaria: Mcnab**

**Escuela primaria: Pompano B.Middle**

**Bachillerato: Northeast**

## ABOUT THIS PROPERTY

---

This true 2-bedroom, 2-bathroom penthouse in the highly sought-after Royal Coast of Lauderdale-by-the-Sea presents a unique secure coastal living at a price well below its market value. Located on the top floor, this home boasts elevated ceilings, creating an open atmosphere throughout. Enjoy resort-style amenities, including a large pool and expansive deck with breathtaking ocean views. Covered parking. The building's exterior is scheduled for a fresh coat of white and light blue paint this April. There is not a spec here. Perfectly positioned between Fort Lauderdale and Pompano Beach, Lauderdale-by-the-Sea offers the best of both worlds: a true island-like atmosphere with easy access to local cafes, shops, restaurants, and nightlife.

# PROPERTY LOCATION

---

Image



©2026 | BRECO REALTY GROUP, LLC,  
TU ASESOR DE BIENES RAÍCES EN MIAMI  
USA: + 1.954.884.5050

[BRECO@BRECREALTY.COM](mailto:BRECO@BRECREALTY.COM) | [POLITICAS DE PRIVACIDAD](#) |  
[ACCESSIBILITY](#)

