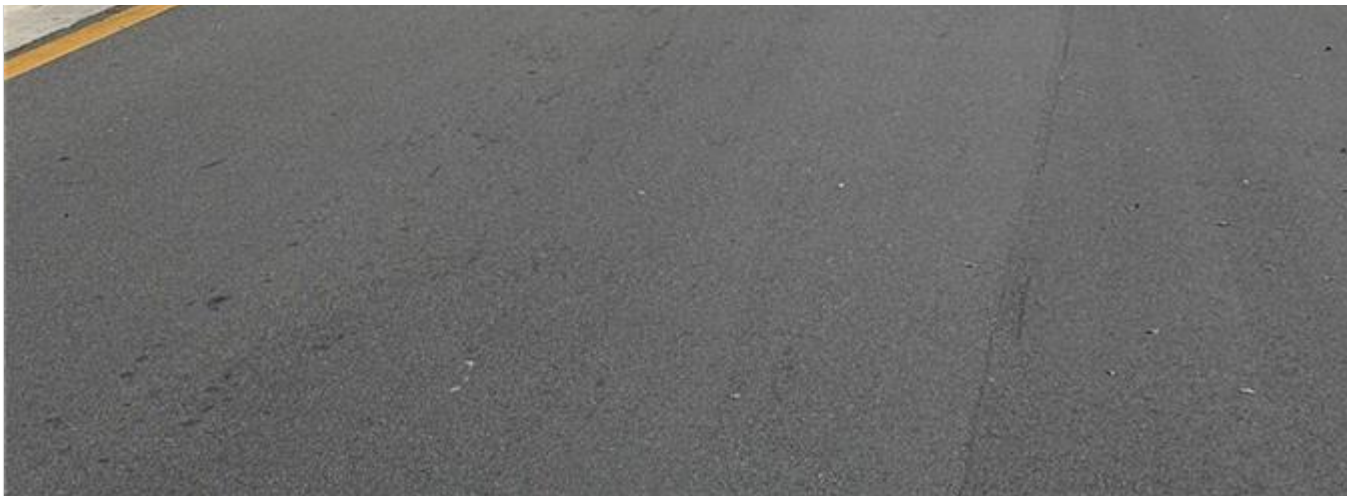




A11902916 SEP 15 2025



Precio: \$143,500

Numero de MLS: A11902916

Condominios/Town Home

2850 Somerset Dr Unit 410L, Lauderdale Lakes, Florida 33311 USA

Cuartos: 2

Baños: 2

Area Habitable: 1,010

Unidad: 410L

HOA Fees: \$555

Año construido: 1979

Comunidades: SOMERSET AT LAUDERDALE LA

Subdivisión: SOMERSET AT LAUDERDALE LA

Escuela elemental: Rock Island

Escuela primaria: William Dandy

Bachillerato: Boyd H Anderson

ABOUT THIS PROPERTY

Excellent investment opportunity! Spacious 2-bedroom, 2-bath condo located in the desirable 55+ community of Somerset at Lauderdale Lakes. Gated and well-maintained complex with resort-style amenities including pools, clubhouse, fitness area, tennis courts, and walking paths. Unit features an open layout with plenty of natural light and a private balcony. Ideal for seasonal living or as an investment property – foreign nationals are welcome! Conveniently located near shopping centers, restaurants, highways, and only minutes from Fort Lauderdale beaches and airport.

PROPERTY
LOCATION



©2026 | BREC REALTY GROUP, LLC,
TU ASESOR DE BIENES RAÍCES EN MIAMI
USA: + 1.954.884.5050

BREC@BRECREALTY.COM | [POLITICAS DE PRIVACIDAD](#) |
[ACCESSIBILITY](#)

