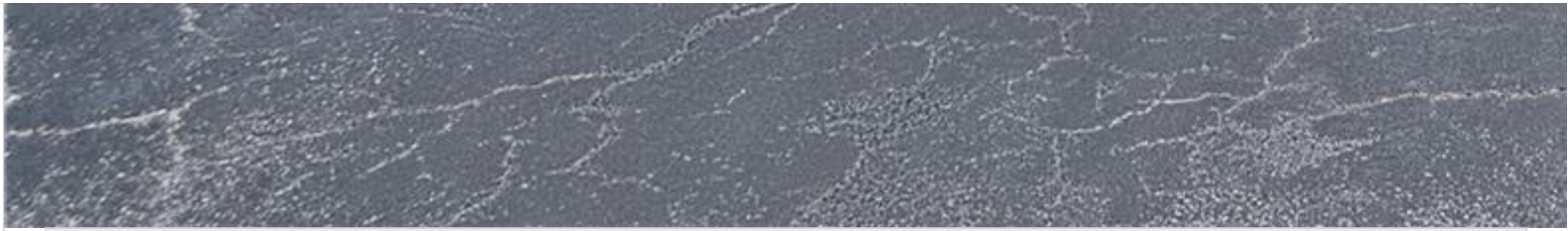




A12008376 SEFMLS© 2026

RESERVED



Precio: \$529,000

Numero de MLS: A12008376

Condominios/Town Home

2679 S Parkview Dr, Hallandale Beach, Florida 33009 USA

Cuartos: 2

Baños: 2

Area Habitable: 1,680

HOA Fees: \$780

Año construido: 1980

Comunidades: HARBOURWOOD SKETCH OF SUR

Subdivisión: HARBOURWOOD SKETCH OF SUR

Bachillerato: Hallandale High

ABOUT THIS PROPERTY

Spacious and beautifully maintained 2-bedroom, 2-bath villa offering 1,688 sq ft of living space with a desirable split floor plan. Conveniently located near shopping centers including Walmart, Publix, Walgreens, CVS, and more. Only 20 minutes to Fort Lauderdale Airport and a quick drive to the beach. Features include a brand new refrigerator, and in-unit washer and dryer for your convenience. The community offers resort-style amenities and is pet-friendly. Pets are permitted in the first year. Easy to show.

PROPERTY LOCATION

Image



©2026 | BRECO REALTY GROUP, LLC,
TU ASESOR DE BIENES RAÍCES EN MIAMI
USA: + 1.954.884.5050

BRECO@BRECREALTY.COM | [POLITICAS DE PRIVACIDAD](#) |
[ACCESSIBILITY](#)