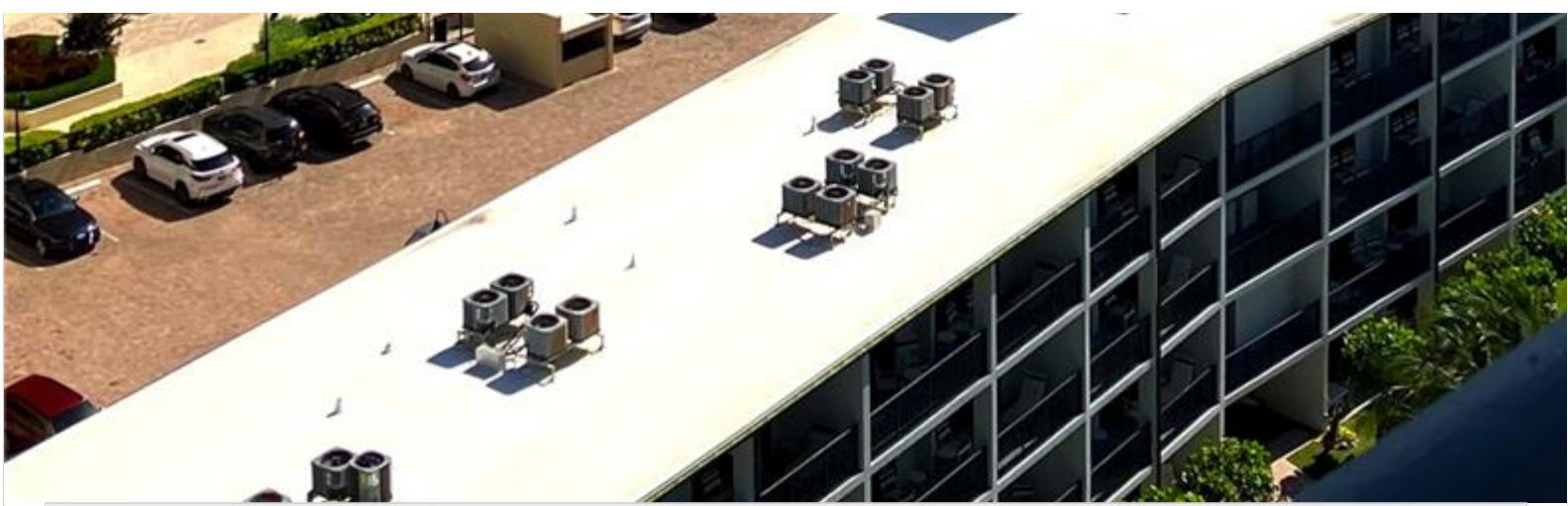




A11852984 - SEFMLS © 2026



**Price: \$495,000**

**MLS Number: A11852934**

**Condo / Town Home**

**2000 S Ocean Blvd Unit 16N, Lauderdale By The Sea, Florida 33062 USA**

**Beds: 2**

**Baths: 2**

**Living Area: 1,160**

**Unit: 16N**

**HOA Fees: \$1,512**

**Waterfront: YES**

**Year Built: 1971**

**Community: ROYAL COAST CONDO**

**Subdivision: ROYAL COAST CONDO**

**Elementary School: Menab**

**Junior High: Pompano B.Middle**

**High School: Northeast**

## ABOUT THIS PROPERTY

---

This true 2-bedroom, 2-bathroom penthouse in the highly sought-after Royal Coast of Lauderdale-by-the-Sea presents a unique secure coastal living at a price well below its market value. Located on the top floor, this home boasts elevated ceilings, creating an open atmosphere throughout. Enjoy resort-style amenities, including a large pool and expansive deck with breathtaking ocean views. The building's exterior is being painted for a fresh coat of white and light blue. No Special Assessments. Perfectly located between Fort Lauderdale and Pompano Beach, Lauderdale-by-the-Sea offers the best of both worlds: a serene, island-like atmosphere with easy access to local cafes, shops, restaurants, and nightlife.

# PROPERTY LOCATION

---

Image



©2026 | BRECO REALTY GROUP, LLC,  
YOUR REAL ESTATE ADVISOR IN MIAMI  
USA: + 1.954.884.5050

[BRECO@BRECREALTY.COM](mailto:BRECO@BRECREALTY.COM) | [PRIVACY POLICY](#) |  
[ACCESSIBILITY](#)

