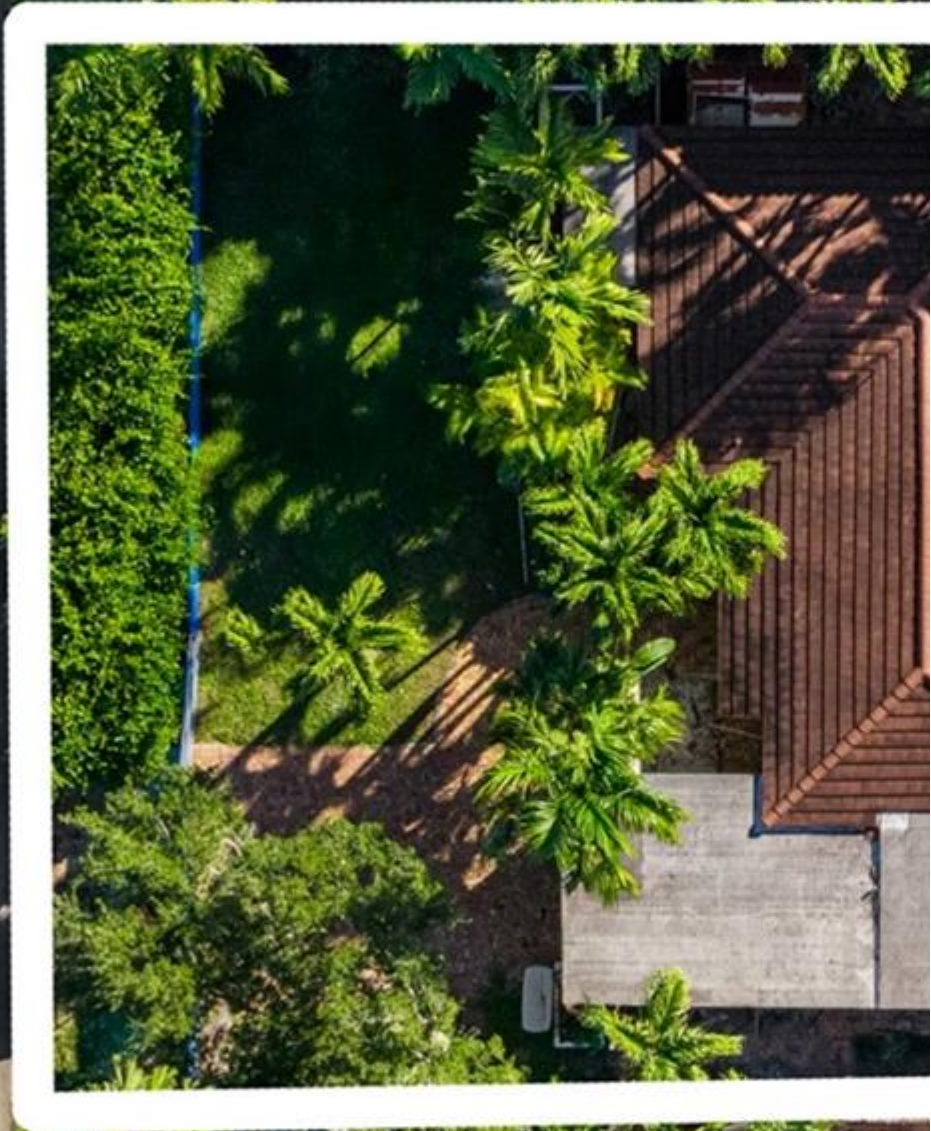


A11950310 SEFMLS© 2026





Price: \$2,950,000

MLS Number: A11950310

Single Family

760 Allendale Road, Key Biscayne, Florida 33149 USA

Beds: 3

Baths: 2

Living Area: 2,388

Lot Square Feet: 7,500

HOA Fees:

Year Built: 1950

Community: BISCAYNE KEY ESTATES

Subdivision: BISCAYNE KEY ESTATES

Elementary School: Keybiscayne

Junior High: Ponce De Leon

High School: Coral Gables

ABOUT THIS PROPERTY

An exceptional opportunity to build your dream home on a prime lot along desirable Allendale Road in the heart of Key Biscayne. Enjoy the unique island lifestyle that makes Key Biscayne so special, with its pristine beaches, top-rated schools, parks, tennis courts, family-friendly atmosphere, Key Biscayne offers a safe, welcoming environment where neighbors become friends and families thrive. Tranquility, convenience, and an exceptional quality of life.

PROPERTY LOCATION

Image



©2026 | BRECO REALTY GROUP, LLC,
YOUR REAL ESTATE ADVISOR IN MIAMI
USA: + 1.954.884.5050

BRECO@BRECREALTY.COM | [PRIVACY POLICY](#) |
[ACCESSIBILITY](#)