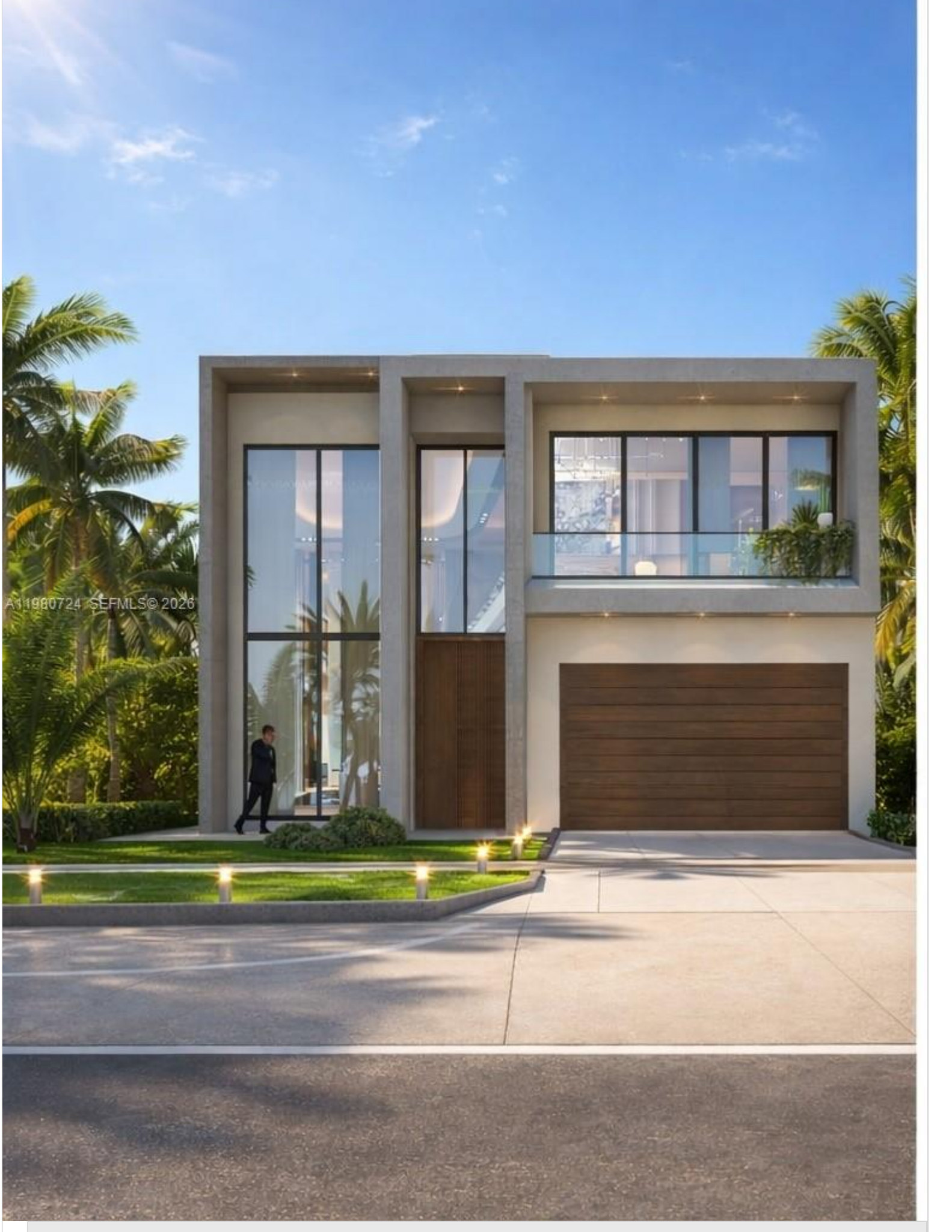




BREC REALTY

Phone: 954-884-5050
<https://www.brecrealty.com/>
Email: brec@brecrealty.com



A11980724 SEFMLS © 2026

Price: \$3,450,000

MLS Number: A11980724

Single Family

433 NE 11th Ave, Fort Lauderdale, Florida 33301 USA

Beds: 4

Baths: 4

Half Baths: 1

Living Area: 4,361

Lot Square Feet: 6,500

HOA Fees:

Year Built: 2026

Community: Victoria Park

Subdivision: Victoria Park

Junior High: Sunrise

High School: Fort Lauderdale

ABOUT THIS PROPERTY

433 NE 11th Ave | Victoria Park | Fort Lauderdale Brand-new modern luxury residence coming to the heart of Victoria Park, one of Fort Lauderdale's most desirable neighborhoods. Construction just started, rare opportunity to secure the home early and be involved in the design process. This striking property will boast 4,361 Sqft Underair 4 oversized bedrooms and 5 custom designer bathrooms, with dramatic architecture and high-end finishes throughout. Enter through a massive custom pivot door into a breathtaking 25-foot ceiling entrance, creating an unforgettable grand arrival and open modern living space. Designed for South Florida luxury living, the home will include a heated resort-style pool and spa, natural gas service, and a full smart home system. The chef's kitchen will feature a JennAir luxury appliance package including a 60-inch refrigerator, custom cabinetry, and modern designer finishes. Buyers who purchase now will have the opportunity to work with the developer to design and select finishes, including kitchen style, flooring, accent walls, paint colors, and other interior design elements. The primary suite will offer a spa-style bathroom with an oversized shower, soaking tub, and dual private toilet rooms. Estimated completion: approximately 10 months from groundbreaking. Seller financing available. Contact for details. More homes available

PROPERTY LOCATION

Image



©2026 | BRECO REALTY GROUP, LLC,
YOUR REAL ESTATE ADVISOR IN MIAMI
USA: + 1.954.884.5050

BRECO@BRECREALTY.COM | [PRIVACY POLICY](#) |
[ACCESSIBILITY](#)

